



Installing Dialogic® NaturalAccess® SS7 Monitor Software 3.2

Copyright and legal notices

Copyright © 2004-2010 Dialogic Corporation. All Rights Reserved. You may not reproduce this document in whole or in part without permission in writing from Dialogic Corporation at the address provided below. All contents of this document are furnished for informational use only and are subject to change without notice and do not represent a commitment on the part of Dialogic Corporation or its subsidiaries ("Dialogic").

Reasonable effort is made to ensure the accuracy of the information contained in the document. However, Dialogic does not warrant the accuracy of this information and cannot accept responsibility for errors, inaccuracies or omissions that may be contained in this document.

INFORMATION IN THIS DOCUMENT IS PROVIDED IN CONNECTION WITH DIALOGIC® PRODUCTS. NO LICENSE, EXPRESS OR IMPLIED, BY ESTOPPEL OR OTHERWISE, TO ANY INTELLECTUAL PROPERTY RIGHTS IS GRANTED BY THIS DOCUMENT. EXCEPT AS PROVIDED IN A SIGNED AGREEMENT BETWEEN YOU AND DIALOGIC, DIALOGIC ASSUMES NO LIABILITY WHATSOEVER, AND DIALOGIC DISCLAIMS ANY EXPRESS OR IMPLIED WARRANTY, RELATING TO SALE AND/OR USE OF DIALOGIC PRODUCTS INCLUDING LIABILITY OR WARRANTIES RELATING TO FITNESS FOR A PARTICULAR PURPOSE, MERCHANTABILITY, OR INFRINGEMENT OF ANY INTELLECTUAL PROPERTY RIGHT OF A THIRD PARTY.

Dialogic products are not intended for use in medical, life saving, life sustaining, critical control or safety systems, or in nuclear facility applications.

Due to differing national regulations and approval requirements, certain Dialogic products may be suitable for use only in specific countries, and thus may not function properly in other countries. You are responsible for ensuring that your use of such products occurs only in the countries where such use is suitable. For information on specific products, contact Dialogic Corporation at the address indicated below or on the web at www.dialogic.com.

It is possible that the use or implementation of any one of the concepts, applications, or ideas described in this document, in marketing collateral produced by or on web pages maintained by Dialogic may infringe one or more patents or other intellectual property rights owned by third parties. Dialogic does not provide any intellectual property licenses with the sale of Dialogic products other than a license to use such product in accordance with intellectual property owned or validly licensed by Dialogic and no such licenses are provided except pursuant to a signed agreement with Dialogic. More detailed information about such intellectual property is available from Dialogic's legal department at 9800 Cavendish Blvd., 5th Floor, Montreal, Quebec, Canada H4M 2V9. Dialogic encourages all users of its products to procure all necessary intellectual property licenses required to implement any concepts or applications and does not condone or encourage any intellectual property infringement and disclaims any responsibility related thereto. These intellectual property licenses may differ from country to country and it is the responsibility of those who develop the concepts or applications to be aware of and comply with different national license requirements.

Dialogic, Dialogic Pro, Brooktrout, Diva, Cantata, SnowShore, Eicon, Eicon Networks, NMS Communications, NMS (stylized), Eiconcard, SIPcontrol, Diva ISDN, TruFax, Exnet, EXS, SwitchKit, N20, Making Innovation Thrive, Connecting to Growth, Video is the New Voice, Fusion, Vision, PacketMedia, NaturalAccess, NaturalCallControl, NaturalConference, NaturalFax and Shiva, among others as well as related logos, are either registered trademarks or trademarks of Dialogic Corporation or its subsidiaries. Dialogic's trademarks may be used publicly only with permission from Dialogic. Such permission may only be granted by Dialogic's legal department at 9800 Cavendish Blvd., 5th Floor, Montreal, Quebec, Canada H4M 2V9. Any authorized use of Dialogic's trademarks will be subject to full respect of the trademark guidelines published by Dialogic from time to time and any use of Dialogic's trademarks requires proper acknowledgement.

Windows is a registered trademark of Microsoft Corporation in the United States and/or other countries. Other names of actual companies and product mentioned herein are the trademarks of their respective owners. This document discusses one or more open source products, systems and/or releases. Dialogic is not responsible for your decision to use open source in connection with Dialogic products (including without limitation those referred to herein), nor is Dialogic responsible for any present or future effects such usage might have, including without limitation effects on your products, your business, or your intellectual property rights.

Using the AMR-NB resource in connection with one or more Dialogic products mentioned herein does not grant the right to practice the AMR-NB standard. To seek a patent license agreement to practice the standard, contact the VoiceAge Corporation at <http://www.voiceage.com/licensing.php>.

Revision history

| Revision | Release date | Notes |
|----------------------------------|----------------|-----------------------------------|
| 9000-62437-10 | September 2004 | SRR, SS7 Monitor 2.1 |
| 9000-62437-11 | April 2005 | LBG, SS7 Monitor 2.2 GA |
| 9000-62437-12 | September 2006 | LBZ, SS7 Monitor 2.3 GA |
| 64-0465-01 | July 2009 | LBG, SS7 Monitor 3.0 |
| 64-0465-02 | January 2010 | LBG, SS7 Monitor 3.2 RHEL ES 5.3 |
| 64-0465-03 | February 2010 | LBG, SS7 Monitor 3.2 Windows 2008 |
| Last modified: February 12, 2010 | | |

Refer to www.dialogic.com for product updates and for information about support policies, warranty information, and service offerings.

Contents of this package

Note: The product to which this document pertains is part of the NMS Communications Platforms business that was sold by NMS Communications Corporation ("NMS") to Dialogic Corporation ("Dialogic") on December 8, 2008. Accordingly, certain terminology relating to the product has been changed. Below is a table indicating both terminology that was formerly associated with the product, as well as the new terminology by which the product is now known. This document is being published during a transition period; therefore, it may be that some of the former terminology will appear within the document, in which case the former terminology should be equated to the new terminology, and vice versa.

| Former terminology | Current terminology |
|--------------------|---|
| NMS SS7 Monitor | Dialogic® NaturalAccess™ SS7 Monitor Software |
| NMS SS7 | Dialogic® NaturalAccess™ Signaling Software |
| SS7 Software | NaturalAccess Signaling Software |
| readme files | <i>release_notes.pdf</i> |

Dialogic® NaturalAccess™ SS7 Monitor Software (NA SS7 Monitor Software) requires Dialogic® NaturalAccess™ Development Environment Release 9.0.1 or higher to run properly.

NA SS7 Monitor Software products support the following operating systems:

- Windows® Server 2008, Enterprise edition R2, 32-bit
- Windows® Server 2008, Enterprise edition R2, 64-bit
- Intel Solaris 10 (32-bit)
- SPARC Solaris 10 (mixed mode)
 - 32-bit applications, 32-bit libraries, 64-bit kernel, 64-bit drivers
- SPARC Solaris 10 (64-bit mode)
 - 64-bit applications, 64-bit libraries, 64-bit kernel, 64-bit drivers
- Red Hat Enterprise and Standard Linux, ES, version 5.3
 - 32-bit mode applications, 32-bit driver, Kernel – 2.6.18-128, (SNMP or PAE Kernel support)
- Red Hat Enterprise and Standard Linux, ES, version 5.3
 - 32-bit mode applications, 64-bit driver, Kernel – 2.6.18-128

The NA SS7 Monitor Software installation program installs the following components:

- NA SS7 Monitor Software development and runtime software
- Host applications
- Libraries
- Sample applications

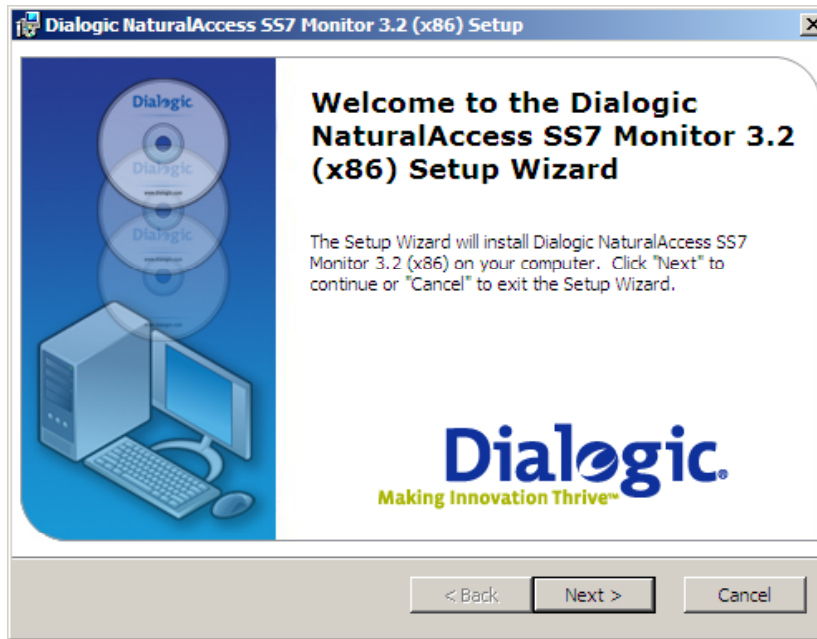
Refer to www.dialogic.com for product updates and for information about support policies, warranty information, and service offerings. From this web site, you can download the NA SS7 Monitor Software and documentation.

Installing the software under Windows

Note: For SS7 Monitor to work properly, you must install the TX Base and Util software packages available in Dialogic® NaturalAccess™ Signaling Software Release 5.3 (or higher). Use the Custom installation procedure to install these packages.

Complete the following steps to install the software under Windows:

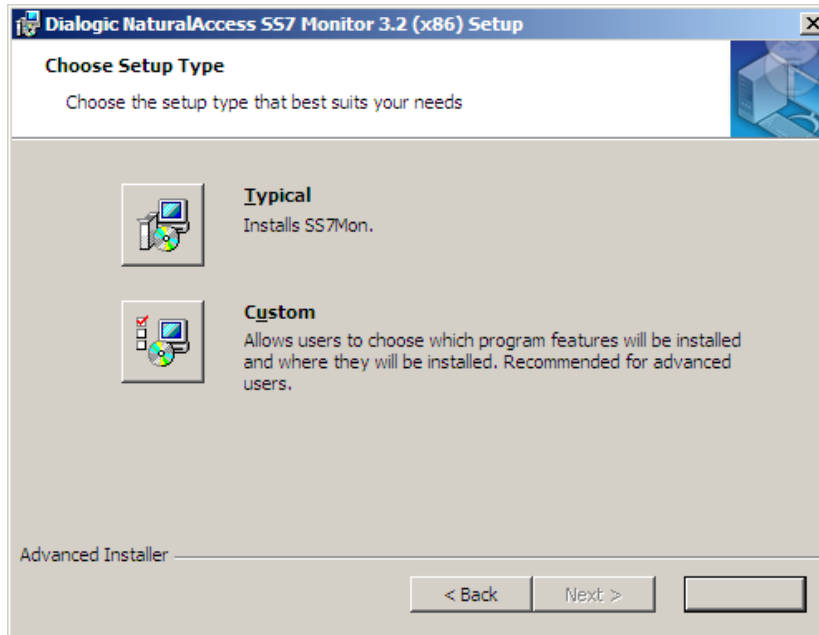
1. After installing the TX Base and Util software packages, log on as a member of the Administrators group.
2. Download the Dialogic® NaturalAccess™ SS7 Monitor Software from www.dialogic.com.
3. Launch Windows® Explorer, and navigate to the location where the software (.msi) file was downloaded.
4. Click the .msi file to install the software. The Welcome screen appears.



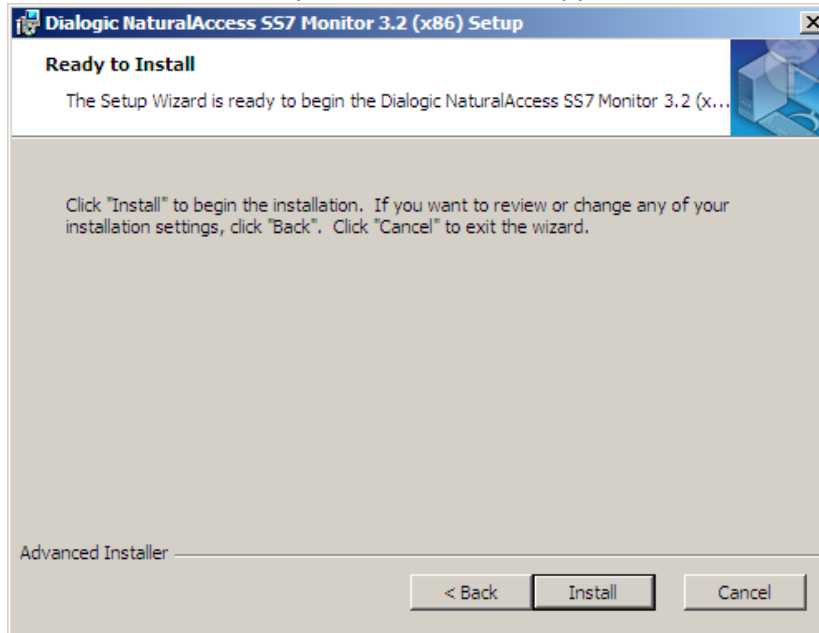
5. Click **Next**. The Setup screen appears.

6. Choose **Typical** as your Setup Type. This will install SS7Mon package only.

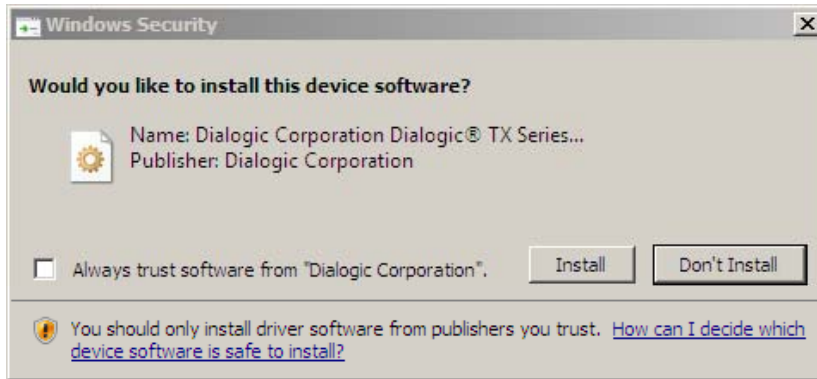
Note: Do not change the default install location.



7. Click **Next**. The Ready to Install screen appears. Click **Install**.

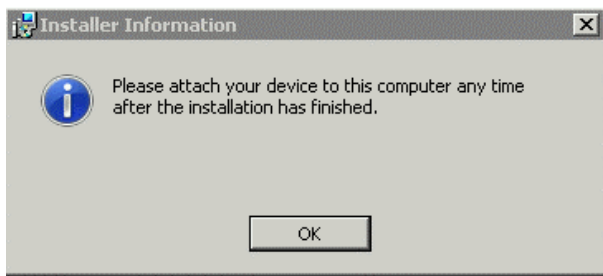


8. If you have TX boards in your system, you will receive a Windows Security alert. Click **Install** to install the TX driver software.

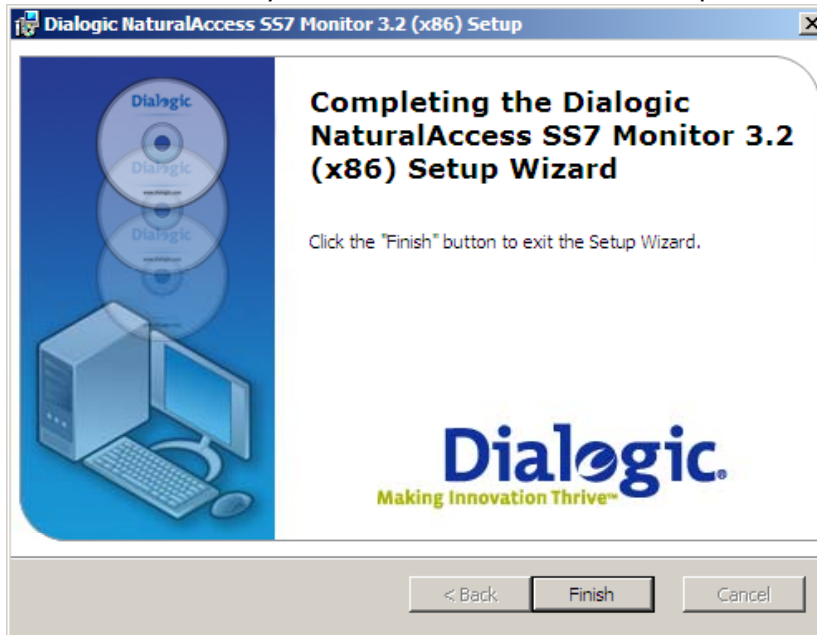


9. If you do not have any boards in the system, a notification for when to add the TX boards will appear.

Note: If you add TX boards after the software installation, the system will automatically update the driver software.



The wizard notifies you when the installation is complete.



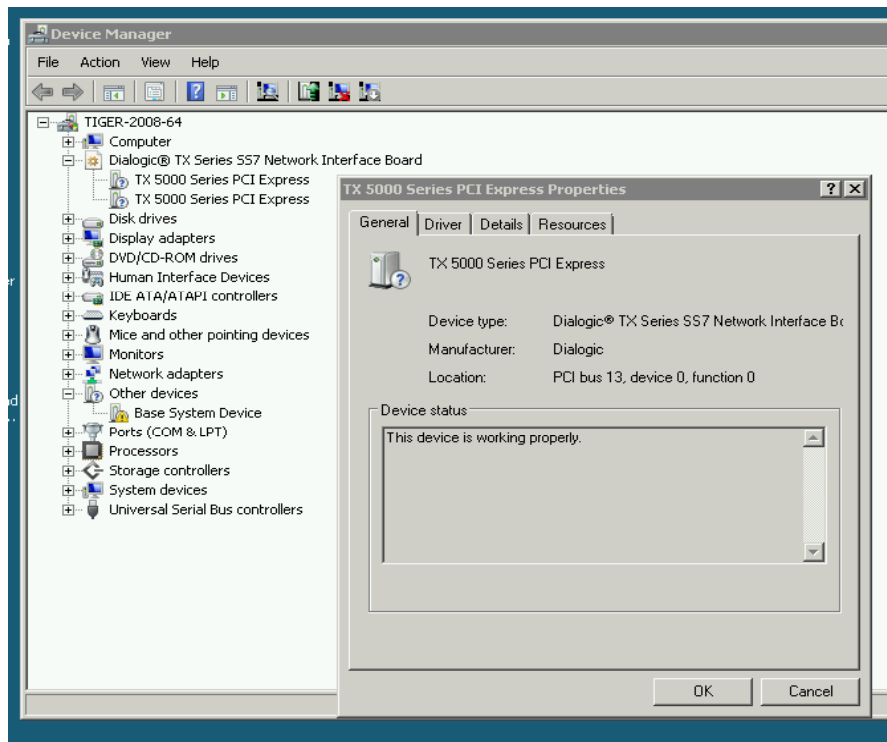
7. Click **Finish**.
8. Reboot Windows before configuring and using the NA SS7 Monitor Software or power off the system if installing TX boards.

For additional release information, refer to the *release_notes.pdf* file located in the software release package.

Verifying the TX device driver status

Complete the following steps to verify the TX device driver status:

1. Click **Start > Control Panel**.
2. In the Control Panel, double-click **System**.
3. Click the Hardware tab, and then click **Device Manager**.
4. Expand the **Dialogic® TX Series SS7 Network Interface Board** entry. TX 4000 Series PCI device drivers appear as **TX 4000 Series PCI** entries. TX 5000 Series PCI Express device drivers appear as **TX 5000 Series PCI Express** entries.
5. Right click each board separately Select Properties. Each board status should be that it is working properly.



Installing the software under Solaris

Note: NA SS7 Monitor Software Release 3.2 installs the TX Base, Util, and SS7Mon software files to a new location on your system: `/opt/dialogic/tx/`.

Complete the following steps to install the software under Solaris:

1. Uninstall any prior versions of NA SS7 Monitor Software.
2. If necessary, update the environment variable settings in the `.bashrc` file:
 - Remove `/opt/nmstx/bin` from the PATH
 - Remove `/opt/nmstx/lib` from the LD_LIBRARY_PATH

Do not remove any variable settings for NaturalAccess Development Environment Software. The following environment settings should remain in the file:

- `/opt/nms/bin`
 - `/opt/nms/lib`
 - `/opt/nms/hotswap/lib`
3. After uninstalling any previous releases of software, enter the following command to remove the NA SS7 Monitor Software base directory (if the directory still exists after uninstall):

```
>rm -rf /opt/dialogic/tx
```

or

Enter the following command to remove the old NMS Communications `/opt/nmstx` directory, if applicable:

```
>rm -rf /opt/nmstx
```

4. Log on as root.
5. Download the Dialogic® NaturalAccess™ SS7 Monitor Software from www.dialogic.com:
 - SPARC Solaris: `txss7mon-3.2-xx-ssol.tgz`
 - Intel Solaris: `txss7mon-3.2-xx-isol.tgz`
6. Enter the following commands to extract the Dialogic® NaturalAccess™ SS7 Monitor Software image from the downloaded file:

```
gzip -d filename .tgz  
tar -xvf filename.tar
```

where **filename** is the base portion of the name of the file that you downloaded.

7. Run the `monitor_install` script located in the directory in which you opened the tar file, and follow the prompts from the script.

Note: Do not change the default install location.

For additional release information, refer to the `release_notes.pdf` file located in the software release package.

When the installation process is complete, proceed with any additional configuration as needed. For more information, refer to the product documentation.

Environment variable settings

To set up the system environment correctly, you must add the following system environment variables in the system login *.profile*:

```
DIALOGIC_ROOT=/opt/dialogic
export DIALOGIC_ROOT
TX_ROOT=$DIALOGIC_ROOT/tx
export TX_ROOT
PATH=$TX_ROOT/bin:$PATH
export PATH
LD_LIBRARY_PATH=$TX_ROOT/lib:$LD_LIBRARY_PATH
export LD_LIBRARY_PATH
```

Reboot the system to set these environment variables.

Installing the software under Red Hat Linux

Note: NA SS7 Monitor Software Release 3.2 installs the TX Base, Util, and SS7Mon software files to a new location on your system: */opt/dialogic/tx/*.

Complete the following steps to install the software under Red Hat Linux:

1. Log on as root.
2. Download the Dialogic® NaturalAccess™ SS7 Monitor Software from www.dialogic.com.
3. Unzip and untar the download file by entering the following commands:

```
gzip -d filename.tgz
tar -xvf filename.tar
```

where ***filename*** is the base portion of the name of the file that you downloaded.

4. Run the *monitor_install* script located in the directory in which you opened the *tar* file, and follow the prompts from the script.

Note: Do not change the default install location.

5. Run one of the following commands to implement the environment changes:
 - `./etc/profile.d/txbase.sh`
 - Reboot the system.

For additional release information, refer to the *release_notes.pdf* file located in the software release package.

Environment variable settings

To set up the system environment correctly, you must add the following system environment variables in the system login *.profile*:

```
DIALOGIC_ROOT=/opt/dialogic
export DIALOGIC_ROOT
TX_ROOT=$DIALOGIC_ROOT/tx
export TX_ROOT
PATH=$TX_ROOT/bin:$PATH
export PATH
LD_LIBRARY_PATH=$TX_ROOT/lib:$LD_LIBRARY_PATH
export LD_LIBRARY_PATH
```

Reboot the system to set these environment variables.

Using NA SS7 Monitor Software documentation

The *Dialogic® NaturalAccess™ SS7 Monitor Software Developer's Reference Manual* and associated NaturalAccess manuals are available from www.dialogic.com. From this web site you can:

- Download or view individual manuals in HTML format.
- Print individual manuals using the Adobe Acrobat Reader available from www.adobe.com.

The following tables summarize the NA SS7 Monitor Software and associated SS7 documents according to subject.

Configuring and managing the system

| For information about... | Refer to the... |
|---|--|
| Installing and configuring NA SS7 Monitor Software to monitor network traffic | <i>Dialogic® NaturalAccess™ SS7 Monitor Software Developer's Reference Manual</i> |
| Developing applications to monitor and control redundant and standalone configurations | <i>Dialogic® TX Series SS7 Boards Health Management Developer's Reference Manual</i> |
| Using TX utilities to load and configure a TX board, and to diagnose hardware and software issues | <i>Dialogic® TX Series SS7 Boards TX Utilities Manual</i> |

Installing TX Series hardware

| For information about... | Refer to the... |
|---|---|
| Configuring and installing a TX Series board and verifying its installation | <i>Dialogic® TX 4000 PCI SS7 Network Interface Board Installation Manual</i> <i>Dialogic® TX 4000C Compact PCI SS7 Network Interface Board Installation Manual</i> <i>Dialogic® TX 5000E PCI Express SS7 Boards Installation Manual</i> |

Configuring and controlling protocol engines

| For information about... | Refer to the... |
|---|---|
| Establishing communication channels between host applications and TX boards | <i>Dialogic® TX Series SS7 Boards CPI Library Developer's Reference Manual</i> |
| Developing applications that perform task loading | <i>Dialogic® TX Series SS7 Boards Loader Library Developer's Reference Manual</i> |
| Developing applications that control the H.100/H.110 switch fabric and the T1/E1 interfaces | <i>Dialogic® TX Series SS7 Boards TDM for SS7 Developer's Reference Manual</i> |
| Obtaining system-level information | <i>Dialogic® TX Series SS7 Boards TX INFO Library Reference Manual</i> |

Removing the software

Under Windows, you can remove all of the NA SS7 Monitor Software at once or remove individual software components. The Solaris/Linux removal script removes all the NA SS7 Monitor Software components.

Windows

Complete the following steps to remove NA SS7 Monitor Software under Windows:

1. Make sure that no applications are using NA SS7 Monitor Software components or libraries.
2. Click **Start > Control Panel**.
3. In the Control Panel, double-click **Programs and Features**.
4. Select **Dialogic NaturalAccess SS7 Monitor 3.2**, and click **Remove**.
5. Follow the prompts as appropriate for your system.
Use the **Remove** option to remove the entire NA SS7 Monitor Software package. Other options enable you to remove individual components.

After you complete the software removal process, reboot the system before reinstalling or upgrading NA SS7 Monitor Software.

Solaris and Linux

Complete the following steps to remove NA SS7 Monitor Software under SPARC Solaris, Intel Solaris, and Red Hat Linux:

1. Log on as root.
2. Make sure that no applications are using NA SS7 Monitor Software components or libraries.
3. Run the *monitor_remove* script, located in the */opt/dialogic/tx/bin* directory.
The removal script removes all NA SS7 Monitor Software packages.

For additional release information, refer to the *release_notes.pdf* file located in the software release package.